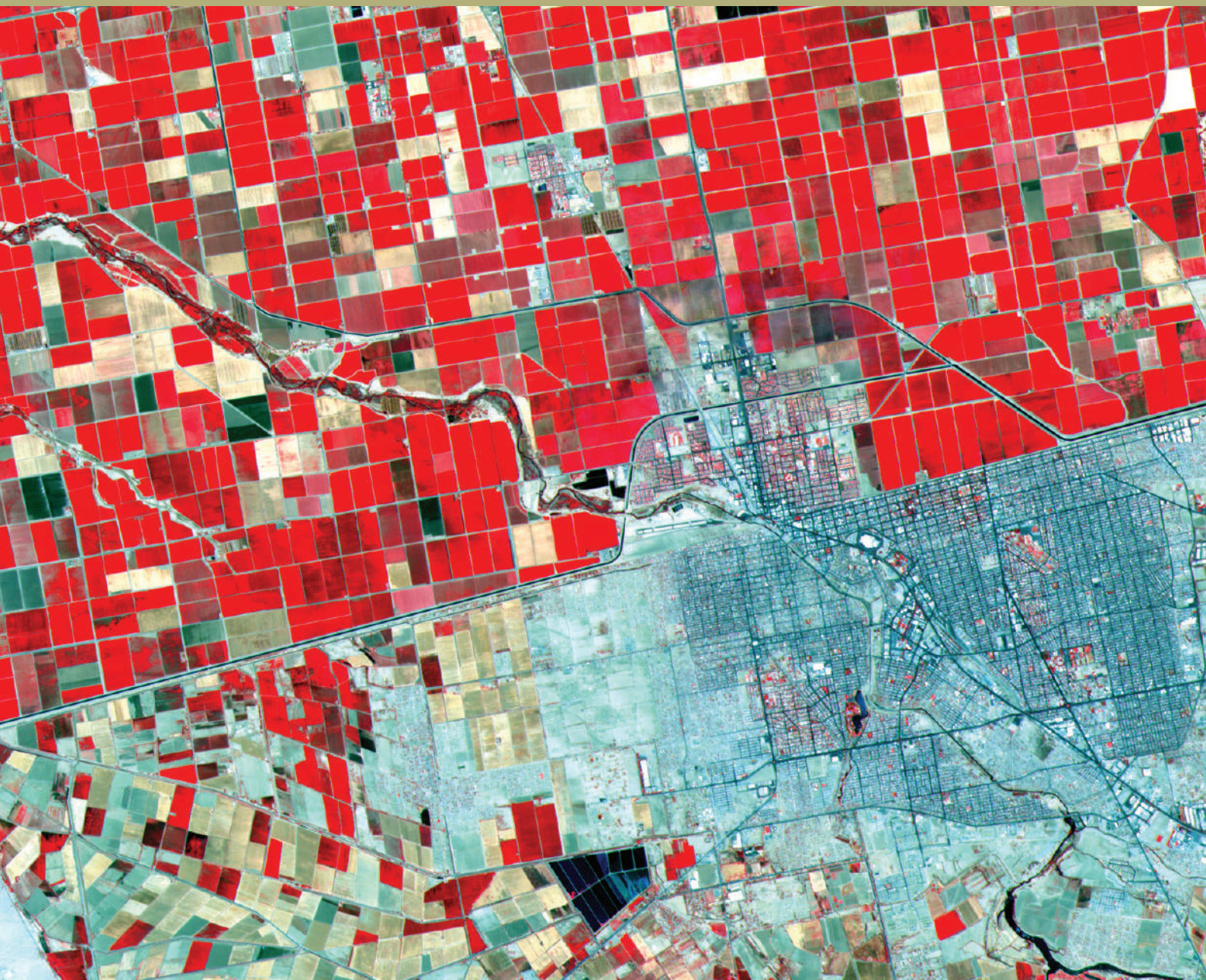


Training Workshop Programme 2025

Geographic Information in Boundary-Making & Dispute Resolution

23 – 25 June 2025

Durham, UK



Explore how modern Geographic Information Systems can contribute to effective boundary creation, management and dispute resolution.



INTRODUCTION

Geographic information, particularly as presented on maps and charts, has always been central to the process of creating and managing international boundaries. Access to accurate geographical information does not guarantee that a boundary will be problem-free, but boundaries created on the basis of poor geographical information almost invariably become a source of friction and occasionally even armed conflict between states.

This workshop is designed to help boundary practitioners make the best use of geographical information in their work. The workshop will examine the use of maps, charts and other traditional sources of geographic information in boundary settings and explore how modern Geographic Information Systems (GIS) can contribute to effective boundary creation, management and dispute resolution. The workshop will include hands-on exercises designed to allow participants to evaluate key geographic technologies and resources in a range of boundary-related settings

Who should attend?

- Surveyors
- Cartographers
- Diplomats
- Borderland Resource Managers
- Military attachés and border guard commanders
- GIS managers
- Legal Advisors
- Boundary Administrators

TUTORS



Dr Nikolaos Galiatsatos, BSc MSc PhD, is an experienced geospatial professional and educator with more than 15 years international experience (field and office work) in a variety of applications (e.g. Archaeology, Forestry) and sectors (e.g. Academia, Public). Niko is a past lecturer and point of contact of Remote Sensing and GIS for Durham University, where he spent eight years educating at all levels (BSc, MSc, and PhD). He then lectured UK officers for seven years in RSMS (Royal School of Military Survey) on Remote Sensing and Imagery Exploitation modules of the MSc GEOINT programme. Niko has major achievements within research, received awards and has several papers published. He is an expert in geospatial technologies (e.g. GIS, Earth observation) with many invitations to international schools programme delivery. He is the Vice-Chair of the Remote Sensing and Photogrammetry Society.

As a consultant, he has been working on forestry in Guyana for the last fifteen years in a pioneer project leading the way on sustainable forest management. His diverse background knowledge and keen eye for detail provide useful input in the team. His main skills include excellent numerical skills, excellent critical analysis thinking, excellent insight on what data is needed for each geospatial problem solving, fast response to bring forward evidence/information to support an argument, quick at grasping new concepts and keen on learning new methods/techniques.

Niko holds a PhD in Geography (2005) from Durham University, England; MSc in Environmental Studies (distinction, 1999) from University of Strathclyde, Scotland; and BSc in Surveying Engineering (1996) from T.E.I. of Athens, Greece. He is fluent in English and Greek.



Mr Yannick Le Gleau is a French international expert in geographical sciences with over 15 years' experience in cooperation projects on the African continent. After studying at the Ecole Nationale des Sciences Géographiques, which trains the staff of the French Mapping Agency (IGN), he worked for 4 years on a program financed by French cooperation in Nouakchott, Mauritania, with the Nouakchott City Council, carrying out sectoral studies on access to social services and infrastructure in the country's capital.

He then joined the French Mapping Agency and its international branch (IGN-FI), first in Bamako, Mali, to coordinate the country's 1:200,000 scale mapping. Yannick then worked in Brazzaville, Republic of Congo, to support the National Borders Commission. Finally, still with IGN-FI, he worked in Dar Es Salaam, Tanzania, to set up the Integrated Land Management Information System, which aims to digitize land transactions in the country's economic capital, and was more specifically in charge of digitizing some 18,000 cadastral maps into 200,000 vector entities.

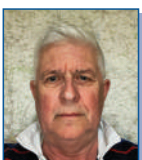
He then worked in Paris as GIS project manager for the Grand Paris project, which aims to build over 200 km of subway metro network. This is the largest construction project in Europe to date.

Since 2021, he has joined the German International Development Cooperation (GIZ), where he works from Addis Ababa, Ethiopia, as GIS/GNSS advisor in support of the African Union Border Programme. He works on the technical aspects of border delimitation and demarcation throughout the continent, for countries interested in technical and financial support from the AU.



Professor Martin Pratt, Director, Bordermap Consulting, is an internationally respected expert in boundary-making, border management and territorial dispute resolution, with more than thirty years' experience working with governments, international organisations, businesses, scholars and practitioners around the world to resolve and prevent boundary-related conflict on land and at sea.

Martin studied Geography at Durham University and International Relations at the University of Chicago before joining IBRU in 1994. Martin was IBRU's Director of Research for thirteen years and he continues to lead the Centre's professional training workshop programme. He is also an honorary professor in Durham's Geography Department. Now based in Canada, Martin founded Bordermap Consulting in 2015, providing geographical and technical assistance to more than forty governments involved in boundary negotiations or third-party dispute resolution processes. He has also served as an advisor to the United Nations, the African Union and the Commonwealth Secretariat on land and maritime boundary issues.



Professor Peter Vujakovic, Emeritus Professor of Geography, Canterbury Christ Church University (UK), has been involved in teaching and researching issues related to cartography since the 1980s. His areas of interest include; thematic map design, maps in geopolitics and national identity, and maps for development education. A major focus of his research has been maps in the news media and their role in geopolitical and environmental discourse. As a member of the British Cartographic (BCS) he is a former Editor of the Cartographic Journal and is currently an Editor of Maplines magazine. He is co-editor of the Routledge Handbook of Maps and Cartography and has been an expert contributor to The Times Comprehensive Atlas of the World and the international History of Cartography project. His work on maps and power was recently summarised in the chapter 'Dark cartographies: mapping slow violence' available via Elgar-online.

PROGRAMME

Monday 23 June	0900-0945	Introduction <ul style="list-style-type: none"> The process of boundary-making The role of geographers in boundary-making and dispute resolution
	0945-1100	Sources of geographic information 1: maps and charts <ul style="list-style-type: none"> Types of map The science and art of cartography The significance of coordinate systems, scale and projection
	1100-1130	<i>Refreshments</i>
	1130-1300	Sources of geographic information 2: remotely-sensed imagery <ul style="list-style-type: none"> Types of imagery Applications of remotely-sensed imagery Acquiring and interpreting imagery
	1300-1400	<i>Lunch</i>
	1400-1530	Geographic information in land boundary definition: lessons from GIZ's support to the African Union Border Programme <ul style="list-style-type: none"> Overview of the AUBP Approaches to delimitation, demarcation and reaffirmation Types of assistance Case studies
	1530-1600	<i>Refreshments</i>
	1600-1700	Practical exercise <ul style="list-style-type: none"> Using maps and imagery to identify uncertain boundaries

Tuesday 24 June	0900-1030	Geographic information in maritime boundary delimitation 1 <ul style="list-style-type: none"> Geographic aspects of maritime jurisdiction Charts, imagery and other sources of geographic information for baseline definition
	1030-1100	<i>Refreshments</i>
	1100-1230	Geographic information in delimiting maritime space 2 <ul style="list-style-type: none"> The role of the technical expert in maritime delimitation Constructing maritime limits and boundaries
	1230-1330	<i>Lunch</i>
	1330-1700	Practical exercises <ul style="list-style-type: none"> PC Classroom-based exercises with GIS software and datasets
	1900	<i>Workshop dinner at Durham Castle</i>

Wednesday 25 June	0900-1030	Geographic information in third-party boundary dispute resolution <ul style="list-style-type: none"> The evidentiary value of maps Other geographical evidence Presenting geographical information to courts and tribunals
	1030-1100	<i>Refreshments</i>
	1100-1230	Round table: data and techniques for addressing boundary-related challenges Topics to be addressed may include: <ul style="list-style-type: none"> Field surveys and research Identifying boundaries in rivers Locating watersheds Mapping international boundaries
	1230-1300	Wrap-up
	1300-1400	<i>Lunch</i>

What will it cost?

The cost of the workshop will be **£2,685** per participant. Fees include 3 nights accommodation and some meals. Payment can only be accepted in GBP sterling, however, we are able to accept payment by most major credit and debit cards.

Full payment **MUST** be received prior to the workshop to guarantee the booking. If full payment is not received before the deadline date of **1 June 2025**, any provisional places booked will be removed. Bookings made after 1 June will only be guaranteed with payment in full and if places are still available.

Reduced Workshop Rate for LDC List Countries

For countries on the United Nations Least Developed Countries List (LDC), the cost of the workshop will be **£1,685** per participant. NOTE: Places will be restricted to only 2 places per LDC country per workshop at this reduced rate. Any additional places will be available at the full cost price. Places will be available on a first come first served basis.

In addition to tuition and all course materials, the fees cover the following:

- Accommodation Hotel Indigo Durham for the nights of 22, 23 and 24 June.
- Lunch and refreshment breaks on 23, 24 and 25 June
- Evening dinner on 23 June
- Tour of Durham Cathedral (subject to availability)

Accommodation for additional nights can be booked at additional cost to the participant subject to availability.

The Venue

Teaching venue

The workshop teaching will take place at Mill Hill Lane, Durham University



Accommodation

Accommodation for 3 nights will be at Hotel Indigo Durham, 9 Old Elvet, Durham DH1 3HL

<https://durham.hotelindigo.com>



How to book

Places are limited and early booking is highly recommended:

1. Contact the IBRU Team or complete the online booking form at: <https://www.durham.ac.uk/research/institutes-and-centres/ibru-borders-research/training-and-workshops/professional-training-workshops/>
2. Acknowledgement of the provisional booking will be sent by email with information on how to pay.
3. If payment is not received by the deadline specified, the reserved place will be cancelled and your booking removed to a waiting list. Your place will only be confirmed when payment is received and if a place is still available.

Additional information

Venue and Location

Workshop accommodation will be based at Hotel Indigo which is in Durham City Centre.

Durham is located in the North East of England and about 250 miles north of London. It lies on main road and rail lines between London and Edinburgh and nearby airports offer connections to London Heathrow, Paris and Amsterdam.

Travel

You are expected to organise your own travel arrangements to Durham. Please be aware that if you require a visa to visit the United Kingdom, you will be required to apply for your own visa for entry into the country. Please allow enough time for your visa to be processed before the start of the workshop. A letter on invitation can be provided to support your visa application.

Language

Teaching and workshop materials will be in English. We regret that we are unable to provide translation or interpreting services.

Cancellations

Cancellations must be received in writing not later than the 1 June 2025 and will be subject to a £250 cancellation fee, unless a substitute participant is offered. After this date the full registration fee will be charged for all cancellations.

Programme Changes

IBRU reserves the right to modify the programme as necessary without notice to participants.



The J.R.V. Prescott Scholarship

Thanks to a generous donation from the estate of international boundaries scholar JRV Prescott, IBRU is pleased to offer the JRV Prescott Student Scholarship Programme, to support postgraduate attendance at IBRU training workshops.

Each year, IBRU will award one student a scholarship covering workshop registration, plus up to £500 to defray expenses, to attend one of that year's regularly scheduled training workshops. To be eligible a student must be enrolled in a postgraduate course of study, in any discipline.

This workshop is eligible for the Prescott Scholarship.



Cover Image: Variations in land use and irrigation across the Mexico USA boundary in vicinity of Calexico-Mexicali (ASTER Satellite image courtesy of NASA/GSFC/MITI/ERSDAC/JAROS and the US/Japan ASTER Science team)

Contact Information

If you have any questions about the workshop please contact the IBRU Team.

IBRU: Centre for Borders Research, Department of Geography, Durham University, DH1 3LE, United Kingdom

Tel: +44 (01)191 334 1965

Email: ibru@durham.ac.uk

Web: www.durham.ac.uk/ibru

